

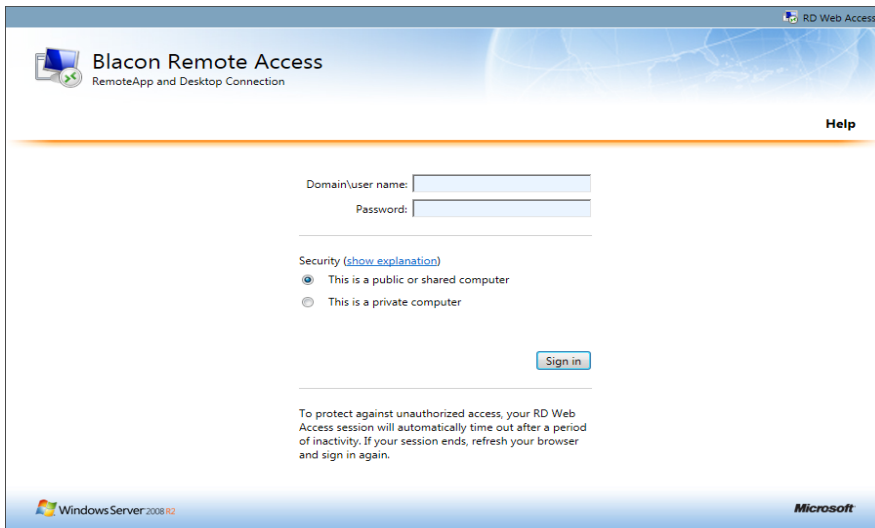
Remote Access from a Windows Device

***PLEASE NOTE** – This will only function correctly using Microsoft Internet Explorer

Step 1

Open up Microsoft Internet Explorer and type in <https://remote.blaconhighschool.net>

This will load the following page



The screenshot shows the login page for Blacon Remote Access. The page title is "Blacon Remote Access" with the subtitle "RemoteApp and Desktop Connection". There is a "Help" link in the top right corner. The login form includes fields for "Domain/user name:" and "Password:". Below these fields, there is a "Security" section with a link "(show explanation)" and two radio button options: "This is a public or shared computer" (which is selected) and "This is a private computer". A "Sign in" button is located below the radio buttons. At the bottom of the page, there is a warning: "To protect against unauthorized access, your RD Web Access session will automatically time out after a period of inactivity. If your session ends, refresh your browser and sign in again." The footer includes the "Windows Server 2008 R2" logo and the "Microsoft" logo.

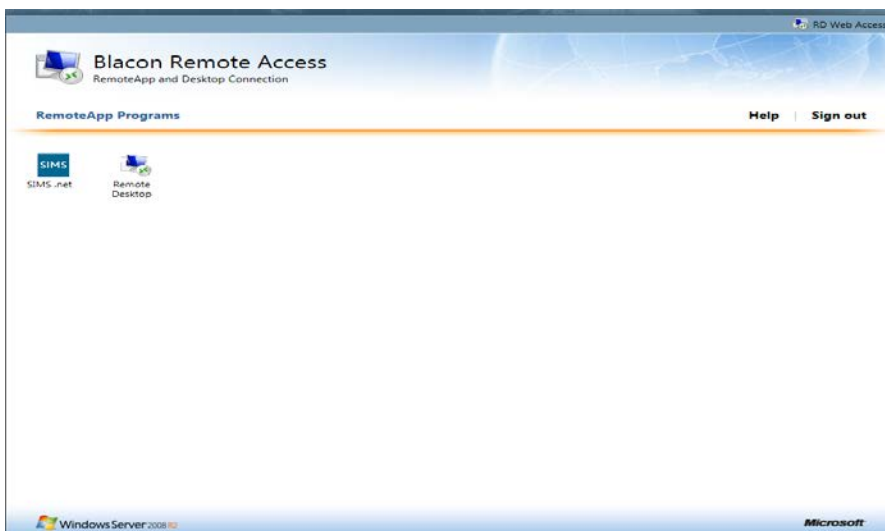
Step 2

Enter your Blacon High School user details for example

Username: blaconhs\School username

Password: Your own school password

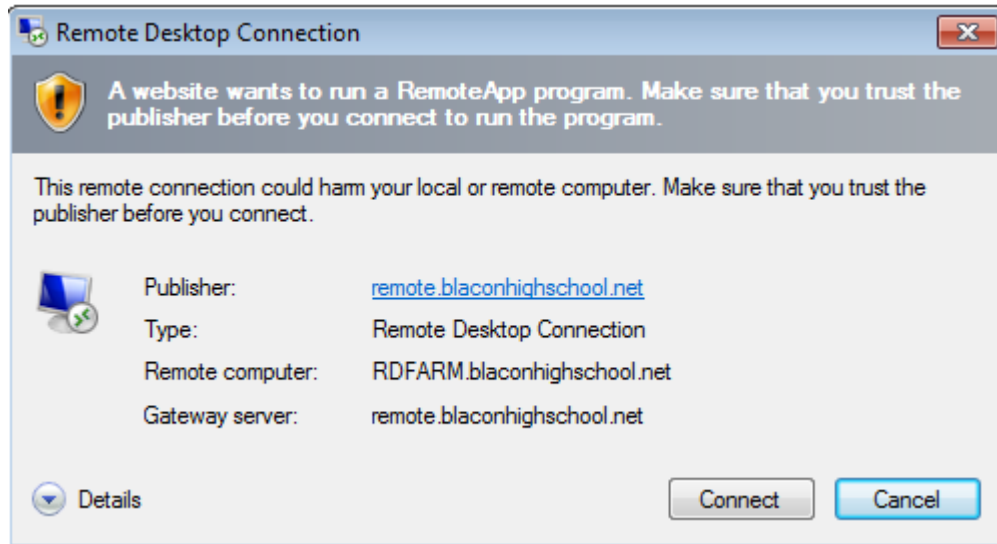
Then click sign in, the following windows should load if you have logged in correctly



The screenshot shows the dashboard after a successful login. The page title is "Blacon Remote Access" with the subtitle "RemoteApp and Desktop Connection". There are "Help" and "Sign out" links in the top right corner. Below the title bar, there is a section titled "RemoteApp Programs" which contains two icons: "SIMS .net" and "Remote Desktop". The footer includes the "Windows Server 2008 R2" logo and the "Microsoft" logo.

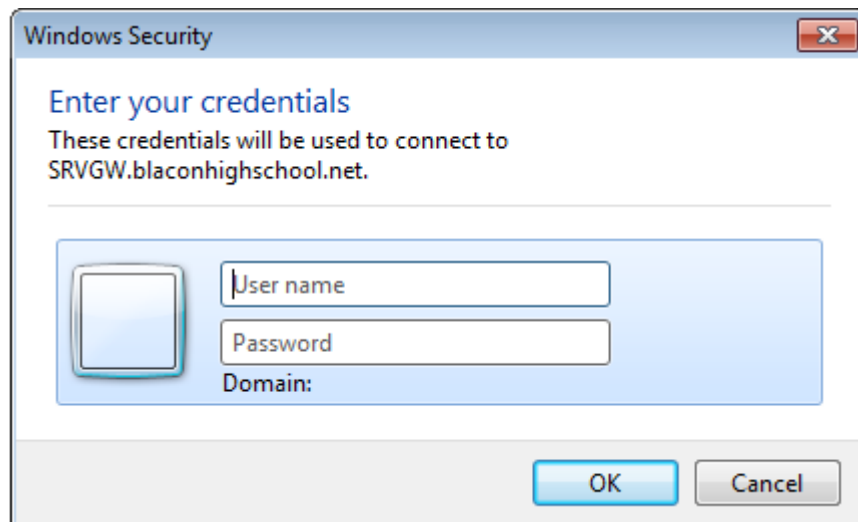
Step 3

Double click on the Remote Desktop icon, a pop up box will load, click connect



Step 4

Once you have clicked connect a box requesting login details will again display, this is a second security layer, please enter your school details as per earlier request for eg



Username: blaconhs\username

Password: school password

Now click Ok, this will now load you a windows live desktop.