

CRE8TIVE PSHE

5 YEAR CURRICULUM PACKAGE BROCHURE



WWW.CRE8TIVERESOURCES.COM



WHO WE ARE

Cre8tive Resources believes in providing a **modern, exciting, high quality and engaging** curriculum for all students no matter what background they are from. Cre8tive Resources CIC is a not for profit Social Enterprise set up to help support teachers, parents and students all across the UK.

Our resources will **enthuse, engage and inspire** your students whilst allowing them differentiated access to new concepts, ideas and the safe space to challenge societal expectations and perceptions.

We aim to arm teachers with a fantastic arsenal of resources that can help them in **delivering outstanding educational outcomes** for their students.

Cre8tive Resources is led by our inspiring CEO Brett Kingsnorth who is a secondary PSHE, Citizenship and Careers school leader with over 10 years' experience in the classroom.



WANT TO FIND US ONLINE, READ OUR REVIEWS OR GET IN TOUCH?

It's simple! Just click on one of the apps and you'll be directed to the page of your choice!

Please also feel free to contact us for sample material, any queries or to place an order.

Email: thecre8tiveresources@gmail.com

Website: www.cre8tiveresources.com

Tel: +44 7591 810146

CRE8TIVE PSHE 5 YEAR SUMMARY

A collection of over **188 Lessons** for KS3 and KS4. This brand new PSHE curriculum has been designed to help a PSHE Secondary Department deliver the new statutory reforms for RSE and Health in compliance with the PSHE Association framework. It has been developed by a team of experts in consultation with a range of specialists from different fields.

188 EDITABLE POWERPOINT LESSONS

Each year group will receive PSHE (Careers, Citizenship, Statutory RSE, Statutory Health, British Values) Lessons. Year 7-10 will receive **40** lessons & Year 11 will receive **28** lessons.



18 HOMEWORK PROJECTS

This package includes **18** Enterprise, Careers & PSHE Homework Projects (**6** each for Year 7, 8 & 9) covering many aspects needed for Outstanding PSHE provision, with optional Assessment Criteria.



28 PSHE UNIT QUIZZES

These PowerPoint quizzes will test your students' knowledge in an exciting and captivating manner. Year 7-10 will each receive **6** End of Unit Team Quizzes and Year 11 will receive **4** quizzes.



28 STUDENT PSHE WORK BOOKLETS

Year 7-10 will each receive **6** Student Work Books and Year 11 will receive **4** Work Books.



OTHER SUPPORTING MATERIALS

30 Document PSHE HOD Folder including:

- Excel mapping document (to show Ofsted and School Governors how your resources meet all the new statutory requirements)
- PSHE School Audit Tool (to assess where else across the curriculum PSHE content is being covered)
- Curriculum overviews
- Access to our Cre8tive PSHE App
- Health & Wellbeing Mindfulness activities



CRE8TIVE PSHE YEAR 7 LESSONS

MANAGING CHANGE 🧑🏻

- Intro to PSHE
- Getting to know people
- What is a community?
- Careers & your future
- Sleep & relaxation
- Financial Education
- Transition points your life



CELEBRATING DIFFERENCES 🧑🏻🧑🏻🧑🏻

- Multicultural Britain
- What is your identity?
- Nature Vs Nurture
- Equality Act 2010
- Breaking down Stereotypes
- Prejudice and Discrimination
- Challenging Islamophobia



STATUTORY RSE & HEALTH TOPICS COVERED

- Families
- Respectful relationships, including friendships
- Online & the Media
- Being safe
- Intimate & sexual relationships, including sexual health
- Mental Wellbeing
- Internet Safety & Harms
- Physical Health & Wellbeing
- Healthy Eating
- Drugs, Alcohol & Tobacco
- Health & Prevention
- Basic First Aid
- Changing Adolescent body



STAYING SAFE 🧑🏻 ONLINE & OFFLINE

- Avoiding Gangs
- Staying Safe Online
- Fortnite, Grooming & online gaming
- What is alcohol?
- What is smoking?
- E-Cigs and vaping
- Energy Drinks (Carrying a knife)



EXTRAS

- PSHE Student Work Books
- End of Unit Team Assessment Quizzes
- End of Unit Confidence Assessments
- Precious gem stone Assessment criteria available with a graduation portfolio



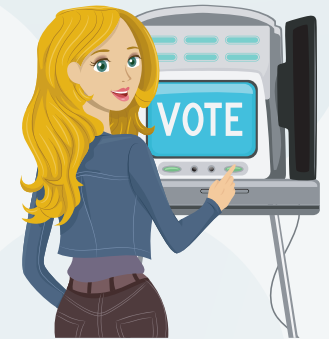
PUBERTY & BODY DEVELOPMENT 🧑🏻

- Intro to Puberty
- Puberty (Girls focus)
- Puberty (Boys focus)
- Personal & Oral Hygiene
- Growing up & FGM
- Assertiveness, consent & Hormones
- Self Esteem & empowerment



POLITICS, PARLIAMENT AND ME 🗳️

- Why is politics important?
- How is our country run ?
- Create a political party
- Elections & Campaigning
- Politics & Debating
- Exploring inside Parliament
- Who is the new Prime Minister?



FRIENDSHIPS, RESPECT & RELATIONSHIPS 🧑🏻🧑🏻

- Consent and boundaries
- Respect and relationships
- What makes a good friend
- Friendships and managing them
- Being positive & Self Esteem
- Pressure & Influence
- What does it mean to be a man?

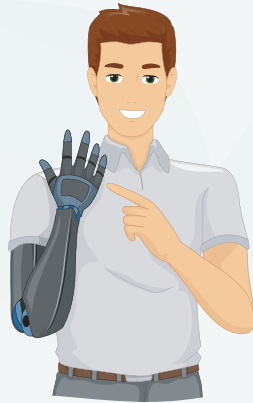
HOMEWORK PROJECTS

- Being a Good Citizen Board Game
- Teenagers Guide to Puberty Magazine
- Building Parliament Models
- Building a Time Capsule-Shoe Box
- Identity Class Collage & Table Bunting
- Display Stand for New Mobile Phone App

CRE8TIVE PSHE YEAR 8 LESSONS

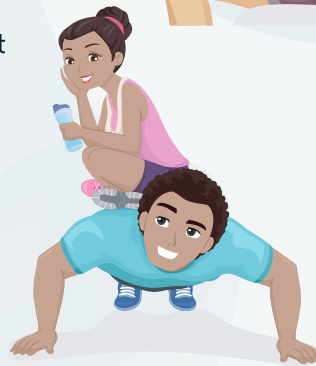
PROUD TO BE ME

- Employability Skills
- Proud to be me + Career Choices
- Career Interests & Jobs
- Self Esteem & the Media
- Labour market information
- Exploring careers



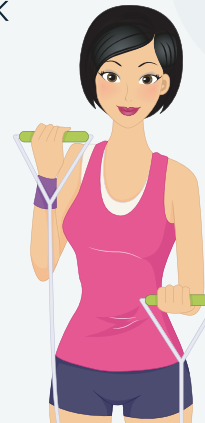
PHYSICAL HEALTH & MENTAL WELLBEING

- Health & Wellbeing
- What is Mental health?
- Positive Body Image
- Child Abuse
- Types of Bullying
- Healthy Eating & Cholesterol
- Stress Management



LAW, CRIME & SOCIETY

- Desert Island Living
- Building a Community
- Making Decisions & Priorities
- Criminals, Laws & Society
- Law Making in the UK
- Prisons, Reform & Punishment



DANGEROUS SOCIETY ONLINE & OFFLINE

- County Lines – What is it?
- County Lines – Who is at risk?
- Substance misuse
- Online safety – Cyber bullying
- Grooming Boys & Girls
- Drugs Education – Alcohol safety
- Child Exploitation & Online Protection



LGBTQA+ EXPLORED

- Intro to Year 8 Lesson
- LGBT what is it?
- LGBT Homophobia in schools
- Supporting those that are LGBT
- Challenging homophobia
- Transphobia
- Coming Out



IDENTITY, RELATIONSHIPS & SEX EDUCATION

- Intro to relationships & Sex Education
- Healthy Relationships
- Dealing with Conflict
- Sexual Orientation
- Gender Identity
- Introduction to Contraception
- What is Love (Periods and Menstrual Cycles)

HOMEWORK PROJECTS

- Become the Teacher & Plan a PSHE Lesson
- Launching a Leisure Centre - Team Presentations
- LGBT+ Champion - Speech Competition
- Prisons for the Future – Table Display
- Media & Society – University Research Project
- Best Day of my Life – Jigsaw Challenge

TESTIMONIAL

Brilliant service from the initial enquiry to personalising my order. An excellent range of resources which are all well structured and tailored to suit different age groups and abilities. Thank you.

TESTIMONIAL

They have an absolutely huge variety of resources covering all aspects of Citizenship and PSHE which has saved me hours of work. The quality is always high and the sheer variety of activities is a delight for all students. Definitely look into this if you teach either Citizenship or PSHE.

EXTRAS

- PSHE Student Work Books
- End of Unit Team Assessment Quizzes
- End of Unit Confidence Assessments
- Precious gem stone Assessment criteria available with a graduation portfolio

CRE8TIVE PSHE YEAR 9 LESSONS

BODY CONFIDENCE

- Self Esteem Changes
- What is a Penis?
- What is a Vulva?
- Bullying in all its Forms
- Dealing with Grief & loss
- Media & Airbrushing
- Cancer Prevention & Healthy Lifestyles



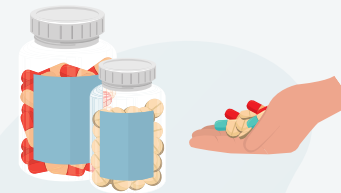
ESSENTIAL LIFE SKILLS

- From Failure to Success
- First Aid Lesson
- (2-3 Hours)
- Importance of Happiness
- What is Anger?
- Saving & managing money
- Employment & Financial management
- Social media & online stress



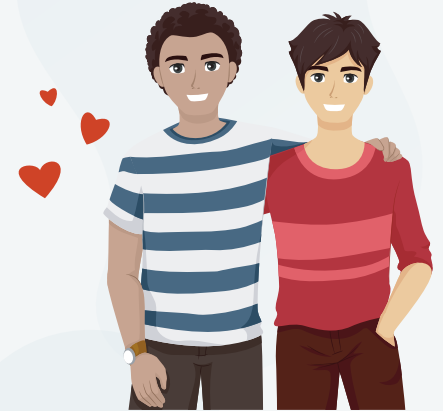
LEGAL & ILLEGAL DRUGS

- Introduction to Drugs
- Different types of Addictions
- Cannabis Products
- Drug Classifications
- "Party" Drugs & Dangers
- Exploring Illegal Drugs & Effects
- Volatile Substance Abuse



SEX THE LAW & CONSENT

- Sexual Consent & the law
- FGM & The Law
- Delaying Sexual Activity
- Why have Sex?
- Relationships and Partners
- Pleasure and Masturbation
- What are STI's?



STATUTORY RSE & HEALTH TOPICS COVERED

- Families
- Respectful relationships, including friendships
- Online & the Media
- Being safe
- Intimate & sexual relationships, including sexual health
- Mental Wellbeing
- Internet Safety & Harms
- Physical Health & Wellbeing
- Healthy Eating
- Drugs, Alcohol & Tobacco
- Health & Prevention
- Basic First Aid
- Changing Adolescent body



COMBATING EXTREMISM & TERRORISM

- Conspiracies & Extremist narratives
- Extremism in all its forms
- What is Terrorism?
- Proud to be British
- The Radicalisation Process
- Counter Terrorism
- Anti – Semitism



CONTRACEPTION & STI'S

- STI Lesson
- Contraception Available
- The Condom Lesson
- Exploring the realities of Contraception
- Sexual Harassment & Stalking
- HIV and AIDS
- AIDS – Prejudice & Discrimination

EXTRAS

- PSHE Student Work Books
- End of Unit Team Assessment Quizzes
- End of Unit Confidence Assessments
- Precious gem stone Assessment criteria available with a graduation portfolio



HOMEWORK PROJECTS

- School Campaign to Promote Health & Wellbeing
- The Fake Newspaper – Building Magazine
- Design a Rival TV Show to Love Island –
- Design a Home Office Strategy to Combat War on Drugs
- What does Happiness Mean to You? – Mood Board
- Sexual Health Forum – Debate on How to Reduce Teenage Pregnancy

CRE8TIVE PSHE YEAR 10 LESSONS

VIOLENCE, CRIMES & SEEKING SAFETY 🛡️

- Honour Based Violence
- Forced Marriages
- Online Gambling
- Social Media Validation
- Keeping Data Safe
- Modern Day Slavery
- Preventing Knife Crime



RIGHTS & RESPONSIBILITIES 🗝️

- Instagram Generation
- Targeted Advertising
- Marriage - what is it?
- Rights & Responsibilities
- Consumer Rights
- Employment rights
- Exploring a paycheck



MENTAL HEALTH & WELLBEING 🧠

- Child abuse (CSE)
- Self Harm
- Screen Time & Safe Mobile Phone Use
- Common Mental Health Issues
- Suicidal thoughts & Support
- Promoting emotional wellbeing

EXPLORING WORLD ISSUES 🌍

- International Organisations
- Brexit
- Aid Supporting Other Countries
- Fair Trade
- Peace, War & Conflict
- Women's Rights & Equality
- #Metoo Movement & Time's Up



TESTIMONIAL

Excellent company - very well resourced with activities differentiated for all abilities. Every resource is expertly planned and meets the needs of the classroom. Customer service is excellent and provides timely and effective support when needed.

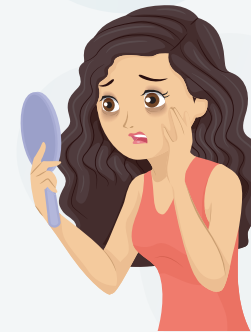
TESTIMONIAL

Cre8tive Resources are a must for every school. The material is well researched, thorough and detailed that challenged every type of students that you teach. There is plenty of material that is differentiated that would reduce the workload of any teacher.



EXPLORING BRITISH VALUES 🇬🇧

- Critical thinking & Fake News
- What is a cult?
- LGBT Rights & British Values
- What are Human Rights
- Exploring Human Rights
- Exploring Britishness & British Values



EXPLORING RELATIONSHIPS & SEX EDUCATION 🧑🏻

- Campaigning against FGM
- Sexting Nudes & Dick Pics
- Porn Life vs Real Life
- Porn materials and attitudes
- Domestic abuse & violence
- Sexual violence (Assault & Rape)
- Sexualisation of the Media

EXTRAS

- PSHE Student Work Books
- End of Unit Team Assessment Quizzes
- End of Unit Confidence Assessments
- Precious gem stone Assessment criteria available with a graduation portfolio



HEALTH & WELLBEING

- What is Mental Health
- Boosting Self Esteem
- Anxiety for Adults
- Sleep Poster
- Anxiety Poster
- Well Being Poster
- What is Emotional Health & Wellbeing
- What is Sleep Hygiene
- Coping Strategies for Mental Health

CRE8TIVE PSHE YEAR 11 LESSONS

ADULT HEALTH & LOOKING AFTER YOURSELF

- Organ donation & Donating Blood
- Teenage Pregnancy Choices
- Abortion (Morals, laws & thoughts)
- Testicular & Prostate Cancer
- Cervical, breast & Ovarian Cancer
- Parenthood
- Love & Abuse are not the same

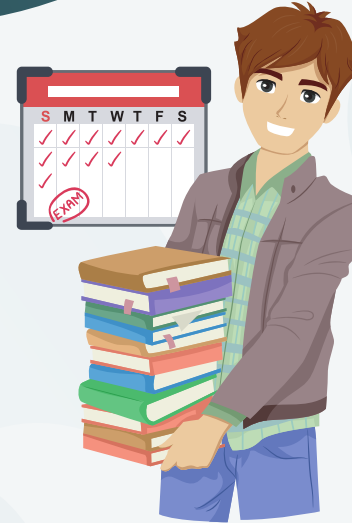


STATUTORY RSE & HEALTH TOPICS COVERED

- Families
- Respectful relationships, including friendships
- Online & the Media
- Being safe
- Intimate & sexual relationships, including sexual health
- Mental Wellbeing
- Internet Safety & Harms
- Physical Health & Wellbeing
- Healthy Eating
- Drugs, Alcohol & Tobacco
- Health & Prevention
- Basic First Aid
- Changing Adolescent body

YOUR FUTURE & BEYOND

- Time management
- LGBT Rights across the world
- Dealing with exam stress & Anxiety
- Instagram Life Vs. Real Life
- Writing a Personal statement
- Writing a CV



TESTIMONIAL

"Excellent resources, which have saved hours of work getting ready for the new statutory changes. Resources are straightforward and accessible for all. Customer care is great and it's been a pleasure dealing with them at every step"



STAYING SAFE

- Virtual Reality & Live Streaming
- New Psychoactive Drugs (NPS)
- Festivals & Drugs
- War on Drugs
- Cosmetic & Aesthetic Procedures
- Drugs substance addiction
- Online reputation & Digital Footprints

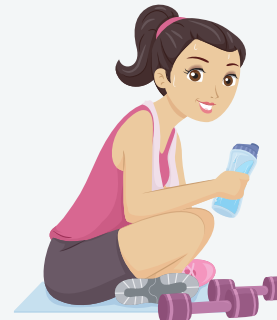


SEXUAL HEALTH

- Peer on peer bullying
- Fertility and what impacts it
- Alcohol & Bad Choices
- Importance of Sexual Health
- Revisiting contraception
- Revisiting STI's
- Respect and Relationships

EXTRAS

- PSHE Student Work Books
- End of Unit Team Assessment Quizzes
- End of Unit Confidence Assessments
- Precious gem stone Assessment criteria available with a graduation portfolio



HEALTH & WELLBEING

- What is Mental Health
- Boosting Self Esteem
- Anxiety for Adults
- Sleep Poster
- Anxiety Poster
- Well Being Poster
- What is Emotional Health & Wellbeing
- What is Sleep Hygiene
- Coping Strategies for Mental Health

HOW IS YOUR PSHE CURRICULUM MAPPED?

EXCEL MAPPING DOCUMENT

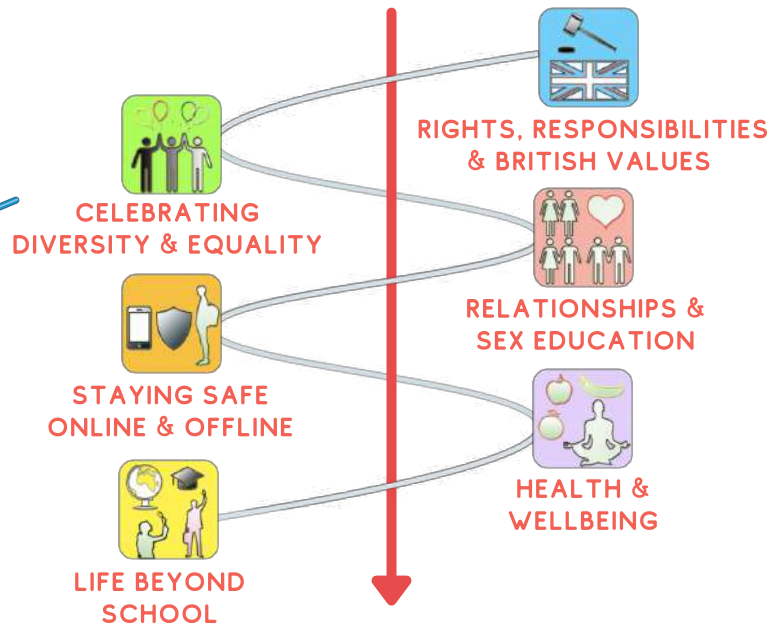
Our Excel mapping document cross references all of our lessons against the following:

- DfE Statutory RSE
- DfE Statutory Health
- Gatsby Benchmarks
- CDI Framework
- PSHE Association Core Themes
- PSHE Association Thematic Builder
- Welsh PSE Framework
- Literacy



THEMATIC APPROACH

Six spiral core themes run throughout Cre8tive Curriculum PSHE. Each year groups' lessons are focused on the following themes:



SUMMARY & CONTENTS

Each KS3 year group will receive 6 fully resourced homework projects - one for each of the spiral core themes.

KS3 HOMEWORK PROJECTS



PROJECT EXPLAINER POWERPOINT



EMPLOYABILITY SKILLS FOCUS



PRECIOUS GEMSTONE ASSESSMENT CRITERIA & FEEDBACK SHEETS



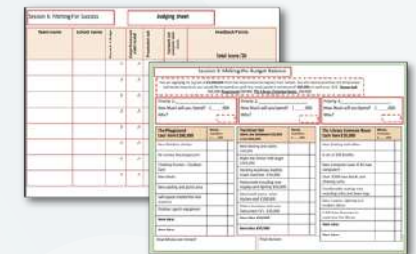
VOTING TOKENS



TEAM ROLES



TEACHER & STUDENT TRACKERS



STUDENT HELP SHEETS & RESOURCES

MAKE UP OF A LESSON PACK

FULLY EDITABLE POWERPOINT

Each PowerPoint is colour coded to the spiral core theme being studied, and includes a Variety of Tasks, Video Embedded URL Clips, Engaging Premium Quality Slides, Extra Support Websites, and Challenging/Thoughtful Questioning.



ASSESSMENT OPPORTUNITY

Each lesson contains a student confidence checker



LEARNING OBJECTIVES

Learning Outcomes are listed on the first page of each PowerPoint lesson



TEACHER NOTES

Teacher notes are available on some slides



MAPPING

Lessons are mapped against Latest DfE Guidance, PSHE Association Core themes and 2020 Requirements



LITERACY KEY TERM LINKS

New vocabulary is signposted on the first page of each PowerPoint



ACTIVITIES

Every lesson has over 60 minutes of activities. This allows the class teacher to pick and chose the most engaging activities for their class allowing for differentiation



BONUS RESOURCES

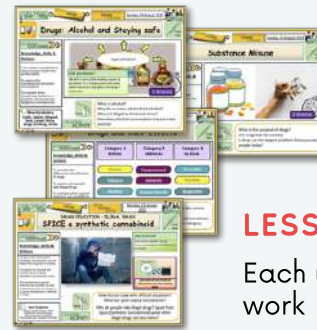
Some lesson packs may also contain Student Worksheet(s), Card sort if applicable, Mindfulness Extension Activities, Extra Reading Material or signposting to other online resources



MAKE-UP OF A UNIT

LESSON PACKS

Each unit contains 6-8 Lesson Packs, matching the Unit of work



END OF UNIT ASSESSMENT OPTIONS

If you choose to assess, 1 End of Unit Assessment is included with three assessment styles to choose from



ACTIVITIES

Per Unit, there are between 6-8 hours of activities included for students to undertake



QUIZ

Each unit contains 1 optional Assessment Quiz with Team Answer Sheets



STUDENT WORK BOOKLET

1 Twelve Page bespoke Student Work Booklet with SPaG Marking (optional)



KS3 PROJECTS

1 optional Homework or Classwork Project is included in KS3 Units



BONUS RESOURCES

Some Cre8tive Curriculum PSHE unit may also contain Extra Student Worksheet(s), Card sorts if applicable (RSE units have a few of these), Mindfulness Extension Activities, Extra Reading Material or signposting to other online resources & Teaching & Learning Extras



HOW DO YOU ASSESS PSHE?

We have developed our own eight-point approach to assessment and measuring progress:

1

GRAFFITI LEARNING JOURNALS

Graffiti learning journals allow students to create a visual reflection of their learning before and after units are taught. Students are given the freedom to express themselves and their thoughts through this medium.



2

WORK BOOKLETS

Student Work booklets contain a page where students can reflect on the unit, set themselves targets and reflect on their academic progress. Teachers can also measure literacy and award a star rating.



3

HOMEWORK PROJECTS

Homework projects allow students to demonstrate & apply what they have learnt in class to an independent home project which is closely linked to employability skills. Projects allow for self, peer and teacher review.



4

CRE8TIVE PSHE APP

Measures progress in a quantifiable way. Students can input their progress and rewards, and generate reports using our mobile app which they can share with teachers.



5

UNIT QUIZZES

Unit quizzes allow students to participate in teams to review each unit that has been taught in a competitive fun knowledge quiz.



6

CONFIDENCE CHECKERS

Confidence Checkers appear at the start and end of every Lesson and Unit and allow a quantifiable way to measure and demonstrate the specific progress made by each student throughout their learning journey. These are available in paper form and can also be tracked on the PSHE app.



7

'REVIEW THE LEARNING OBJECTIVE' EXIT TICKETS

At the end of each lesson, students can demonstrate their learning & understanding of a topic. Exit tickets provide a measurable way to track progress over the course of the curriculum.



8

GRADUATION PORTFOLIOS

All methods of assessment are underpinned by our precious gemstone ratings. Students can be awarded gemstones and receive graduation certificates on completion of projects and quizzes.

Students can input their progress and rewards, and generate reports using our mobile app which they can share with teachers.



HOW HAS THIS CURRICULUM BEEN DEVELOPED?

Cre8tive Resources has worked tirelessly over the last **18+ months** to develop this package. We have worked with a variety of outside experts, including: A Prevent officer, NHS assistant psychologist, mental health experts, female menstrual health educator, former police officer and an independent careers advisor.



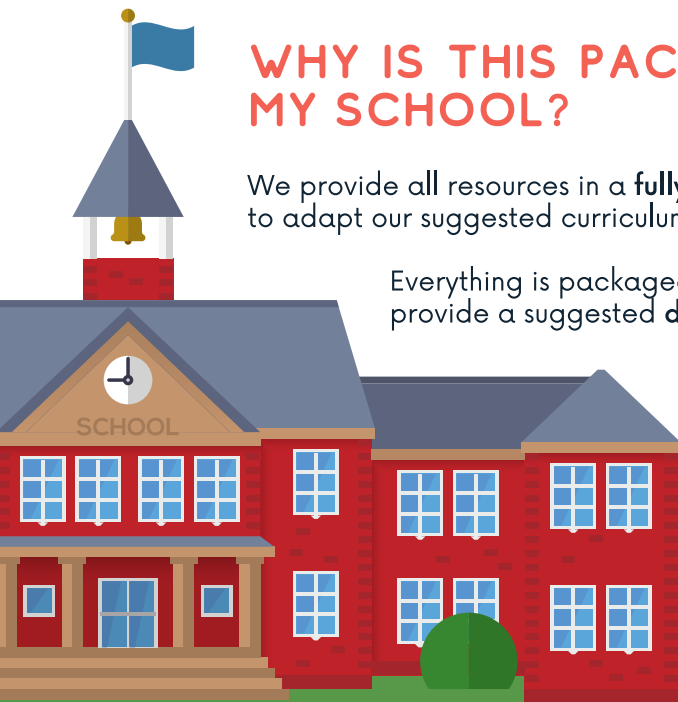
Our curriculum has been trialled at a successful secondary school by launching a PSHE department. This enabled us to see the **huge impact** our resources and approach to PSHE had on winning both staff and students over to the importance of the subject. Since then, we have refined, amend and improved our curriculum offer to best meet the needs of today's students.

WHY IS THIS PACKAGE RIGHT FOR MY SCHOOL?

We provide all resources in a **fully editable** format, enabling you to adapt our suggested curriculum to the needs of your students.

Everything is packaged in "half-termly" blocks and we provide a suggested **delivery order** for your teachers.

We have spent over **5,000 hours** developing this package, and truly believe it is the **most modern, engaging, and adaptable PSHE curriculum available**. We hope that we will save you thousands of hours in preparation & planning time.



WHAT DIFFERENTIATES US?

We have a unique spiral thematic approach to PSHE that runs from Year 7 - 13



We designed our PSHE Curriculum **after** the new statutory framework was announced by the DfE for RSE and Health

You gain access to the PSHE Academy, a 'one stop shop' for questions about PSHE education'



We have a unique, clear assessment framework with a six-point targeted approach to measure progress

One-time payment: no annual subscription fees/no hidden charges/no incremental costs for number of users



We provide discounts for SEMH & PRU schools, and those with a roll of less than 100 students

We re-invest our profits in supporting SEMH, PRU's, NQT's and continually expanding our product range



HOW DO I GET STARTED?

SIMPLY PURCHASE THIS PACKAGE THROUGH:

- School Purchase Orders (Request an invoice)
- Debit, Credit or Paypal Payments (Visit our [Website!](#))
- Cheques (payable to Cre8tive Resources)
- BACS



RECEIVE YOUR PACKAGE AS:

- Instant digital download (Via We Transfer)
- USB via Royal Mail (£10 P&P applicable) - Requests only



PLEASE NOTE:

This product will only be allowed to be used by yourself and the teachers within your school. Please see our website for full T&Cs.